

SecureTrust™ Compliance Manager for PCI

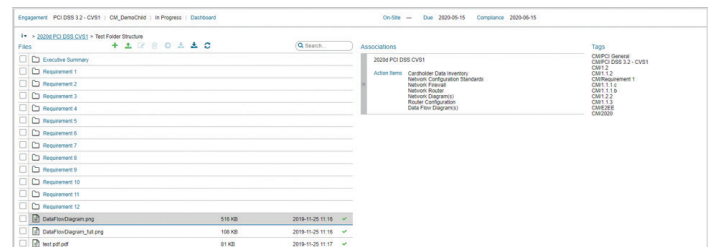
TRACK AND MANAGE YOUR ASSESSMENT ONLINE

Your SecureTrust professional services engagement is delivered with support from our Compliance Manager application in the SecureTrust portal for integrated and on demand management of compliance and security programs.

The online Compliance Manager tool is our proprietary software used to securely collect and store evidence, conduct and manage your SecureTrust assessment activities, track progress and house final deliverables. Compliance Manager helps you save time and effort. It helps ensure interim deadlines are met to complete the assessment and to maintain compliance, reducing risk of breach or non-compliance, and supports rich interaction with the SecureTrust team throughout the assessment process.

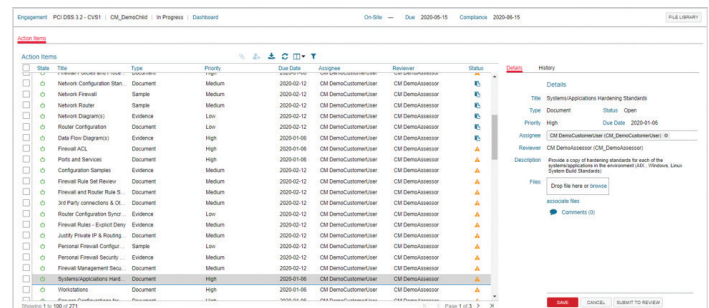
Encrypted File Library

Uploading and transmission of files is a labor-intensive effort. Our file library saves you time in uploading all your evidence and supporting documentation. You can create a zip file of all relevant files locally and securely upload them into Compliance Manager. All files added to our systems are encrypted. Upon upload, the system will extract the contents of your zip file directly into your library. You can also manage your library by creating folders, moving files between folders, and deleting files.



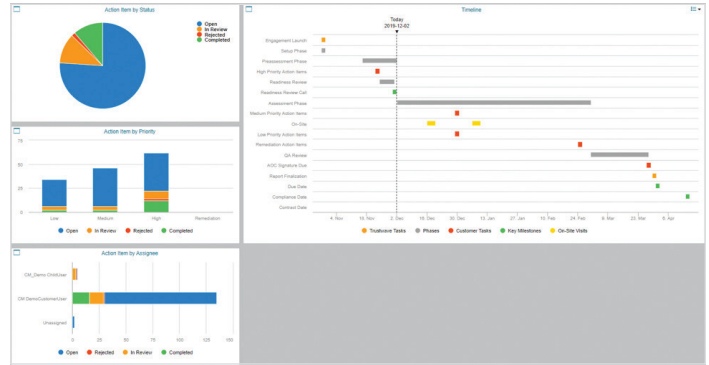
Action Items Tailored for Your Environments

Associating files with requests from your engagement consultant requires significant time and effort. With our experience and scoping process, Compliance Manager is configured to save you time by only issuing requests applicable to your business. You may assign action items to various members of your team to be fulfilled simultaneously. When fulfilling action items, you may associate files you already uploaded to the file library or upload new files. And, multiple files can be uploaded to multiple action items and submitted for review in a single step. When you submit action items for review, your consultant will review and either accept the action item or return it for rework. Our comments feature allows you to comment on the action item to get clarification from your consultant, reducing the likelihood of rejection and rework.



Dashboard Charts and Timelines

Your dashboard in Compliance Manager includes an automated timeline that can also be customized. Our timeline chart helps you manage tasks, directs accountability and provides you clarity for task due dates to help avoid missing deadlines. This timeline, which is also distributed to you in a weekly status report, will keep leadership informed and provide action item progress charts by status, priority, and assignee.



Maturity Scoring

As a deliverable, Compliance Manager provides charts showing maturity scoring for all aspects of your PCI posture. During the assessment phase, your consultant will engage in a scoring process. These scores are made available to you upon delivery of the Report on Compliance (ROC) and can be found on your Completed dashboard. Maturity Scoring can help you see where you might be overly invested and/or where you might choose to invest more heavily. Our expertise and technology allows us to score you against PCI DSS Risk Models and categories, as well as against the PCI DSS Milestones themselves. These scores are also compared to peers in your industry from our proprietary database.



Obtaining Your Final Reports

When your reports are completed, you can download them from either the file library or from the Completed page. Clicking on the 'download reports' link will start a download of a zip file with all final deliverable reports from your engagement with SecureTrust.

